

SENTEY®

WWW.SENTEY.COM



C R I M S O N P R O

PROFESSIONAL GAMER SERIES

MULTILINGUE USER GUIDE

SENTEY CRIMSON PRO

PROFESSIONAL GAMER SERIES

KEYBOARD GS-5920

Copyright©2013 Sentey. All rights reserved.

For more information: www.sentey.com - info@sentey.com

TOLL FREE NUMBRER: USA 1-855-7SENTEY (1-855-773-6839)

All other brand and trademark are the propeties of their respective owners.

The product specifications are subject to change without notice.

CONTENTS

- 4 INTRO
 - HOT FEATURES
- 5 KEY FEATURES
- 8 MULTIMEDIA KEYS
 - PROFILE KEYS
- 9 SWITCHING ON YOUR BACKLIT KEYS
 - WRIST PAD
- 10 MULTIPLE KEY MECHANICAL
- 11 PRODUCT ACCESSORIES
 - SYSTEM REQUIREMENTS
 - PRODUCT SPECIFICATION
- 12 HARDWARE INSTALLATION
- 14 SOFTWARE INSTALLATION
- 17 GAMING SOFTWARE INTERFACE INSTRUCTION
- 21 WARRANTY
- 22 LEGAL INFORMATION

INTRODUCTION

Your professional gaming command center

Control the field of battle like a true overlord with the Crimson Pro™ professional series mechanical keyboard from Sentey! Featuring MEQTECH® Technology, this ultra highend—ergonomically molded—digital hub gives you ultimate control over your favorite gaming titles like never before!

From the 45G actuation force of its mechanical keys, to the 10 programmable macro buttons and individually backlit LED keys, this professional command center was truly custom tailored—from top to bottom—for the professional gamer!

Ultimate victory is at your fingertips with the Crimson Pro™ from Sentey!

HOT FEATURES

- Cherry MX black mechanical key switches.
- 104 keys US layout.
- Individual Red LED on each key (4 Levels of brightness).
- 128K On-Board memory.
- N-Key Rollover (Full via PS/2; 6 via USB).
- Embebbed multimedia keys.
- Built-in 2 High Speed USB 2.0 hub (Max 100mA each).
- Built-in Headphone and microphone jack pass-through.
- Gold plated connectors.
- Heavy duty braided 1.8 mts cable (Approximately 6 feet).
- Tilt legs for better comfort.
- Multimedia keys.
- Windows key lock function.
- Wrist Pad for maximum palm comfort.
- Color keys caps included.
- 5 Profile programmable by software.
- Gaming cluster with anti-ghosting capability.

KEYS FEATURES

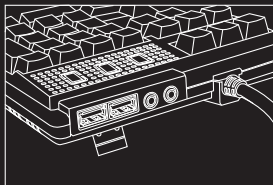
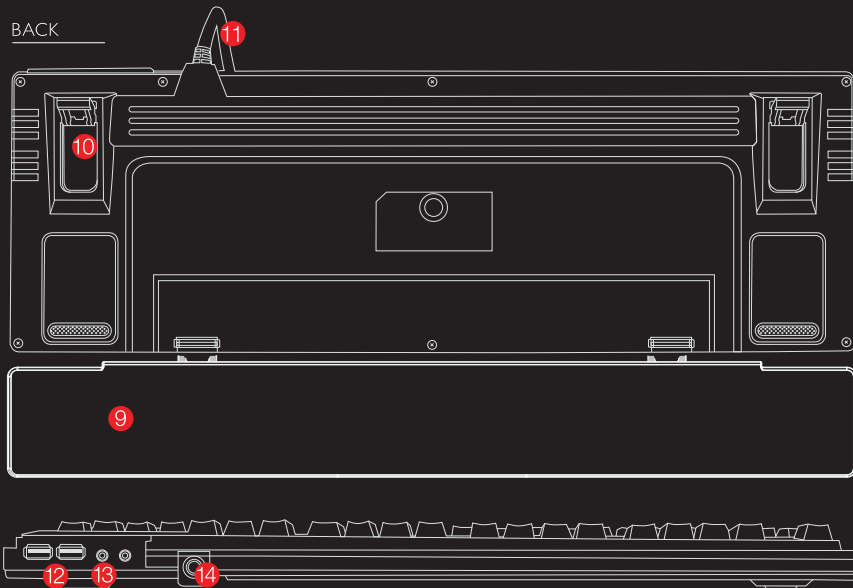
FRONT



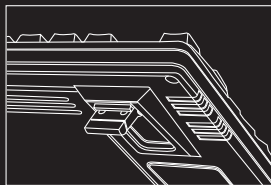
REFERENCES

- 1- Multimedia Keys (F1 to F6)
- 2- 5 Profile Keys (F7 to F11)
- 3- Gaming Mode Activate/Deactivate Key
- 4- Key Numb Lock
- 5- Key Caps Lock
- 6- Gaming Mode ON/OFF
- 7- Selective Gamer Cluster
- 8- Cherry MX Black Key Switch
- 9- Wrist Pad for Maximum Palm Comfort
- 10- Retractable Feet
- 11- Heavy Duty Braided 1.8 Meters Cable
- 12- 2x USB Port 2.0
- 13- Headphone & Microphone Jacks
- 14 -USB Cable Connector

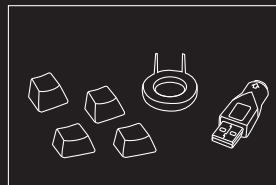
BACK



High Speed 2x USB 2.0 Ports + 3.5mm Headphone + 3.5mm Mic Jacks.

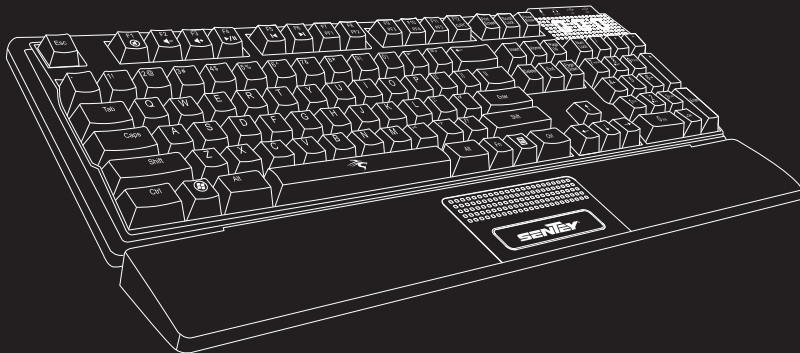
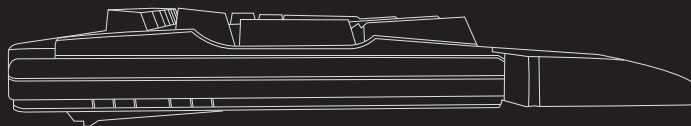
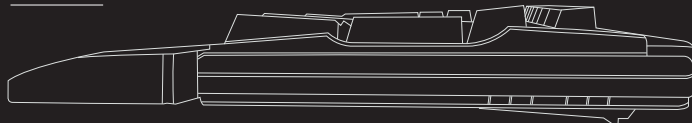


Retractable Feet.



Extra Keycaps + Keycap Puller + PS2-USB Adapter.

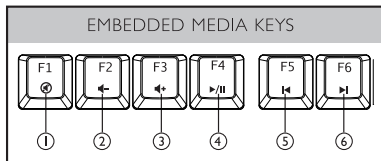
SIDE 1



MEQTECH™
MECHANICAL KEY TECHNOLOGY

MULTIMEDIA KEYS

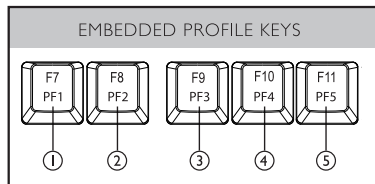
There are 6 embedded multimedia keys for your convenient. Simply press "FN" Key + F1 to F6".



- ① Mute
- ② Volume Down
- ③ Volume Up
- ④ Play/Pause
- ⑤ Previous Track
- ⑥ Next Track

PROFILE KEYS

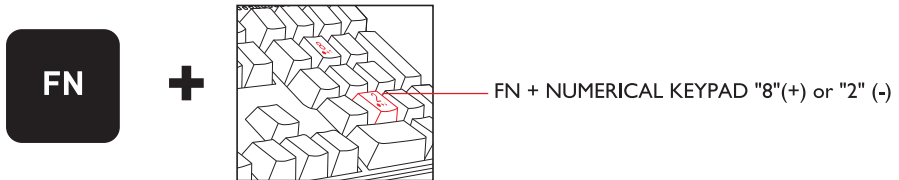
There are 5 embedded Profile keys for your convenient. Simply press "FN" Key + F7 to F11".



- ① Profile 1
- ② Profile 2
- ③ Profile 3
- ④ Profile 4
- ⑤ Profile 5

SWITCHING ON YOUR BACKLIT KEYS

We have 4 different levels of backlighting modes for your Sentey Cobalt Pro™ Keyboard: LEVEL 1 (DIM), LEVEL 2 (NORMAL), LEVEL 3 (BRIGHT) and LEVEL 4 (PULSE BREATHING).

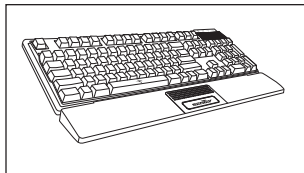


Example: To turn on your backlit keys to Level 2 brightness. Simply press "FN" key + "8" x 2 times. To lower the brightness of the backlit keys, simply press "FN" key + "2".

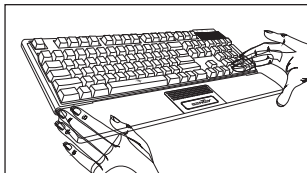
NOTE

Using the "2" and "8" on the main keyboard section will not work. You have to use the "2" and "8" located on the right hand side of the numerical keypad section (as illustration shown above).

WRIST PAD



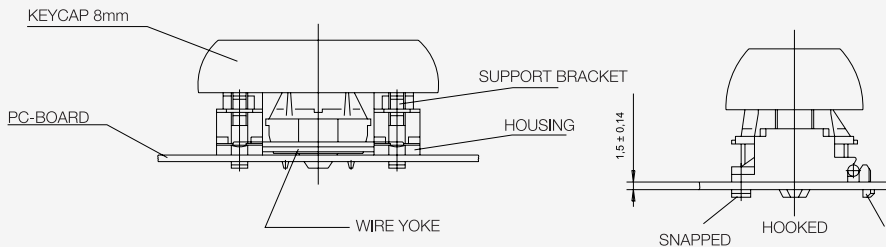
Insert the wrist pad under the keyboard and align the wrist pad with the keyboard.



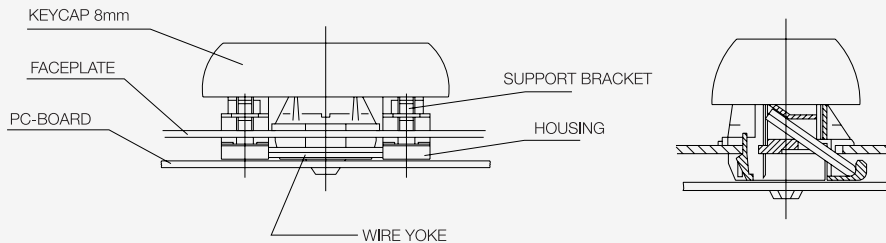
Use both thumb and push on position A.

MULTIPLE KEY MECHANICAL

WITHOUT FRAME



WITH FRAME



PRODUCT ACCESSORIES

- Detachable Wrist Pad.
- Wrist Pad Dimension 44.45 x 6.1 x 1.4 cm (17.5 x 2.4 x 0.55 inch).
- 4 Orange Key Caps.
- Puller 1 Cap Puller Tool.
- Protective Travel Case.
- Documentation Instruction Manual.
- Software/Driver Software/Driver CD.

SYSTEM REQUIREMENTS

- Operating System Windows® 7®, Vista®, XP®.
- Connection Available USB Port.
- Hard Disk Space Minimum of 50MB Available.

PRODUCT SPECS

Key Switch	Cherry MX Black Key Switch
N-Key Rollover	Full via PS/2; 6 via USB
Key Stroke	50 Million Times
Key Force	45G Actuation Force
Number of Keys	104 US Layout
Keypad	Laser Engraved
Internal Buffer	128K On-Board Memory
Backlit	Individual Red LED on Each Key
Backlit Brightness	4 Levels of Brightness (Pulse Mode on Level 4)
Multimedia Keys	Volume Control, Play/Pause, Skip Tracks
Macro Keys	10 Programmable Macro Keys (Thru Software)
Profiles	5 Distinct Profiles
Windows Key	Windows Lock Key Feature
USB Hub	2 High Speed USB 2.0 Ports (max of 100mA each)
Audio Jacks	3.5mm Headphone-Out and Microphone-In Jacks Pass-Through
Cable Length	Extra Thick 1.80 Meters (Approximately 6 Feet)
Cable Spec	Heavy Duty Braided
Connectors	Gold Plated USB and 3.5mm Jack Connectors
Upper Enclosure	Soft Matte Black
Dimensions	44.45 x 14.48 x 2.54 cm (17.5 x 5.7 x 1 inch)
Weight	1.27 kg (2.8LBS)
Warranty	2 Year

HARDWARE INSTALLATION

USB CONNECTION

1. Plug your keyboard into the USB ports of your computer.



2. Windows® will automatically install all the necessary driver for the keyboard.

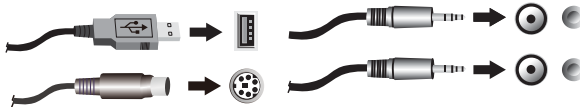
PS2 CONNECTION

1. Plug your keyboard into the PS/2 ports of your computer.



2. Restart your computer, Windows® will automatically install all the necessary driver for the keyboard.

1. Plug your keyboard into the USB, PS/2, MIC (pink), PHONE (green) port of your computer.

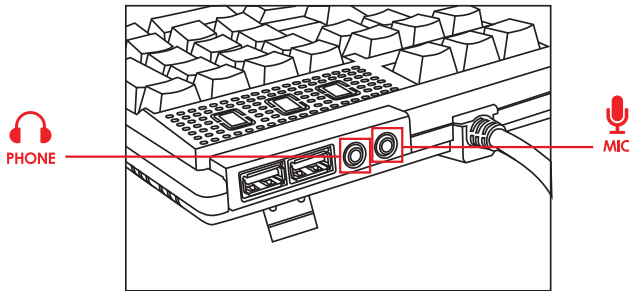


2. You can also use PS/2 to USB adaptor to connect PC.



HARDWARE INSTALLATION

- Restart your computer, Windows® will automatically install all the necessary driver for the keyboard.
- Please refer MIC and PHONE jack connection on keyboard as follow.



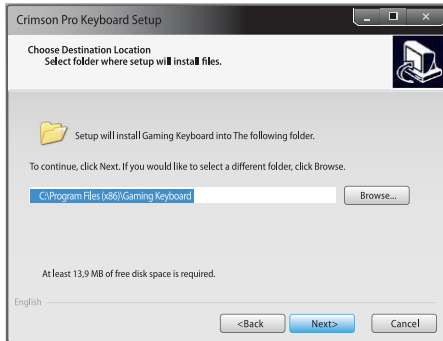
NOTE

USB HUB on keyboard is available for USB portable devices: earphone/headphone, speaker, pendrive or MP3, not for enclosure.

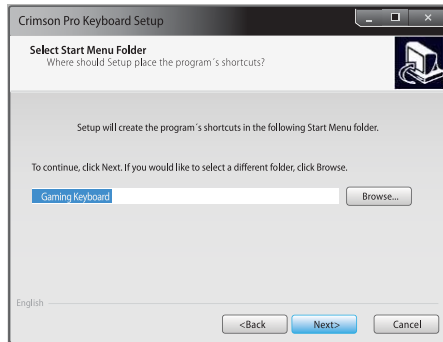
SOFTWARE INSTALLATION



1. Please to enter into installation process go to "Next".



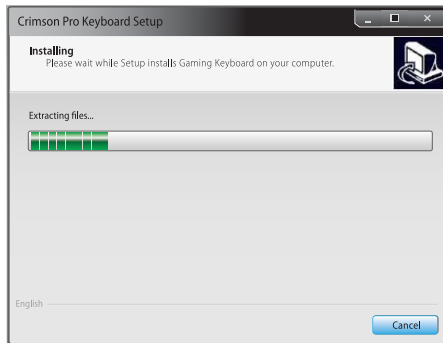
2. Please assign the destination.



3. Please assign the Start Menu Folder and go to "Next".



4. Please confirm the information to Installation and go to "Install".



5. Please wait while setting the installation.



6. Please press "Finish" to close window when the installation has been completed successfully.

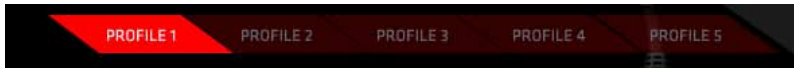
GAMING SOFTWARE INTERFACE INSTRUCTION



1- Setting / Home

Please choose the function that you would like to make your personal setting.

2- Profile Setting



The Keyboard offers 5 Profiles for saving macros. Each of profile can recorder up to 10 macros.

MACRO SETTING MENU



Import:

Restore mouse setting from file.

Export:

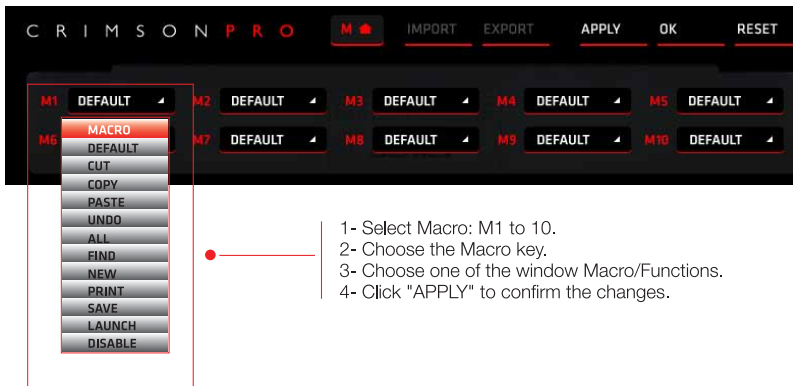
Back up your mouse setting to file.

Apply:

Confirms all changes.

Reset:

It's will reset all setting of mouse (Macro will be deleted).



- 1- Select Macro: M1 to 10.
- 2- Choose the Macro key.
- 3- Choose one of the window Macro/Functions.
- 4- Click "APPLY" to confirm the changes.

MENU ITEM

- 1- **Cut** : Cut selected files.
- 2- **Copy**: Copy selected files.
- 3- **Paste**: Paste selected files.
- 4- **Undo**: Undo selected files.
- 5- **All**: Selected all files.
- 6- **Find**: Open windows to make a search.
- 7- **New**: Create a new file on active program or open explorer window on desk.
- 8- **Print**: Open printing window on active program.
- 9- **Save**: Save current open file on active program.
- 10- **Launch**: Selected a executable program to launch.
- 11- **Disable**: Deactivate all functions of selected key.

MACRO PROGRAMMING



Record/Stop Recording:

Click here to start recording all keyboard or mouse functions which you are operating. After finishing recording, you need to stop recording before further actions. To stop recording, just click this button one time.

Delay Time:

Set Delay time in ms (0,001 second) to modify the duration time.

Repeat:

Repeat the recorded sequence.

Load:

Restore keyboard macro from file.

Save:

Back up your keyboard macro to file.

WARRANTY

Your product comes with a limited warranty. For more information refer to www.sentey.com



C R I M S O N P R O

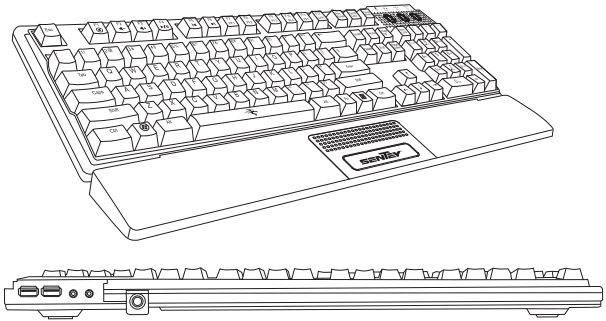
LEGAL INFORMATION

COPYRIGHT AND INTELLECTUAL PROPERTY INFORMATION

©2013 Sentey Inc. All Rights Reserved. Sentey logo, Sentey with tiger logo and other trademarks contained herein are trademarks or registered trademarks of Sentey Inc. registered in the United States and/or other countries. Windows® and the Windows® logo are trademarks of the Microsoft® group of companies.

Sentey Inc. may have copyright, trademarks, trade secrets, patents, patent applications, or other intellectual property rights (whether registered or unregistered) concerning the product in this User Guide. Furnishing of this User Guide does not give you a license to any such copyright, trademark, patent or other intellectual property right. The Sentey Crimson Pro™ may differ from pictures whether on packaging or otherwise. Sentey no responsibility for such differences or for any errors that may appear. Information contained herein is subject to change without notice.

CRIMSON PRO
PROFESSIONAL GAMER SERIES



THE NEW GAMING KEYBOARD BY SENTEY



C R I M S O N P R O
P R O F E S S I O N A L G A M E R S E R I E S

KEYBOARD GS-5920
www.sentey.com